



£2,600 PCM
Victoria Road
Hitchin, SG5 2LS

PROPERTY SUMMARY

An incredible opportunity to rent this four-bedroom property, offering tremendous family-orientated accommodation over three floors.

This property has been improved and extended to provide spacious accommodation, including a fantastic contemporary open-plan kitchen providing a comfortable family retreat.

4



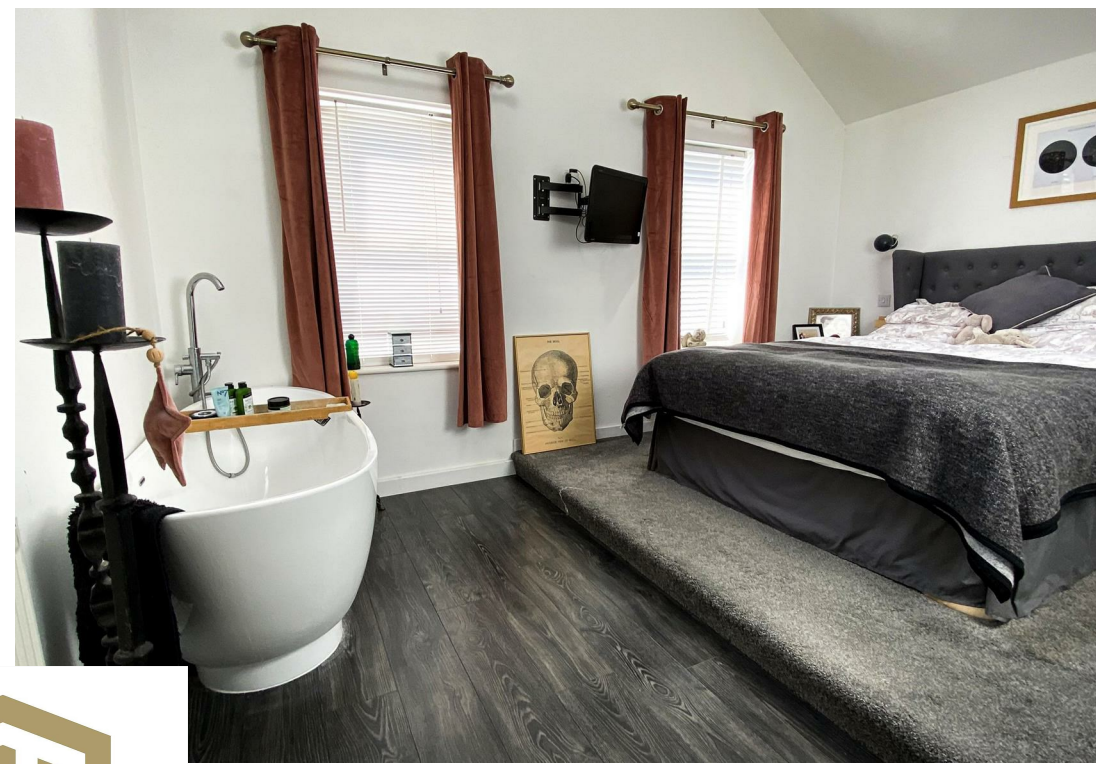
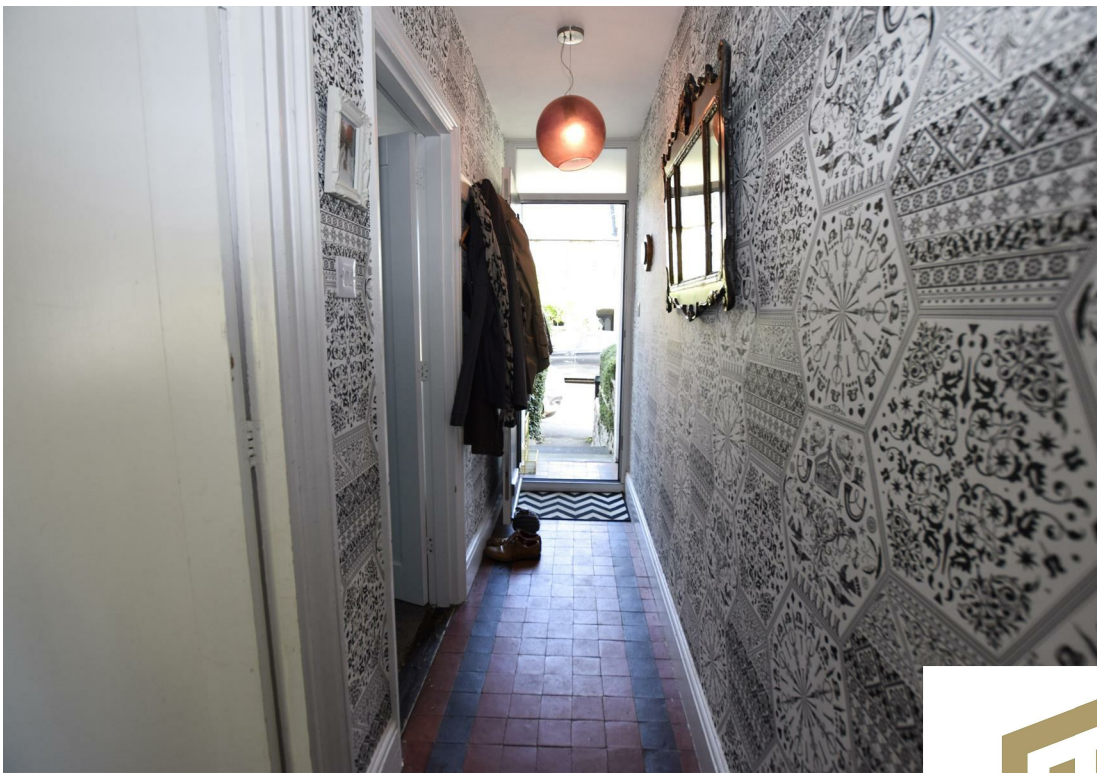
4



2









LOCAL AUTHORITY

North Herts

TENURE

COUNCIL TAX BAND

D

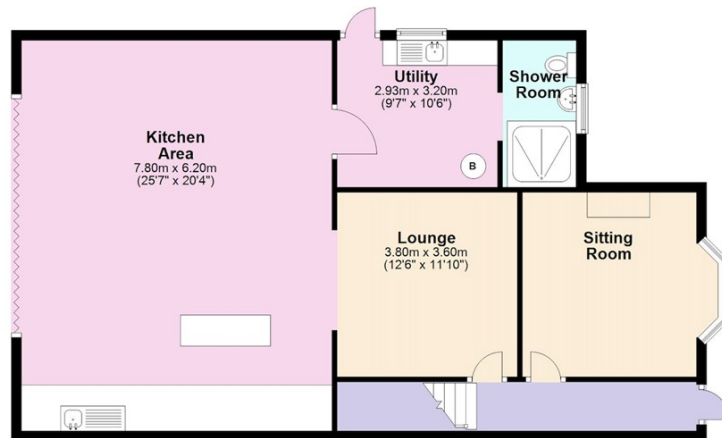
VIEWINGS

By prior appointment only

Energy Efficiency Rating		
	Current	Potential
Very energy efficient - lower running costs		
(92 plus) A		
(81-91) B		
(69-80) C		
(55-68) D		
(39-54) E		
(21-38) F		
(1-20) G		
Not energy efficient - higher running costs		
England & Wales		EU Directive 2002/91/EC

Agents Note: Whilst every care has been taken to prepare these particulars, they are for guidance purposes only. All measurements are approximate and are for general guidance purposes only and whilst every care has been taken to ensure their accuracy, they should not be relied upon and potential buyers/tenants are advised to recheck the measurements

Ground Floor



First Floor



Second Floor



OFFICE ADDRESS

Putterills Lettings
123 London Road
Knebworth
SG3 6EX

OFFICE DETAILS

01462 419333
lettings@putterills.co.uk
www.putterills.co.uk